



NEWSLETTER

– Save Water, Save Lakes –

International Lake Environment Committee Foundation

This newsletter is also available in Japanese.

World Lake Day 2025 - Next Generation Empowerment Program

ILEC, commissioned by Shiga Prefecture, implemented two major youth programs in FY2025 to promote the principle of “World Lake Day” and foster the next generation of lake conservation leaders.

1. High School Students Take on the World – Delegation to WLC20 (Brisbane, Australia) –

Five high school students, selected through an open application and screening process, participated in the 20th World Lake Conference (WLC20) held in Brisbane this July.

Through English presentations at the Youth Session, poster exhibitions, field trips, and interaction with international youth delegates, they gained diverse global experiences and grew tremendously as emerging leaders.

(For more details, please see our Special Edition Newsletter: <https://ilec.or.jp/cms/wp-content/uploads/ENLSI-WLC20.pdf>)

2. 27 Youth Participants from Japan and Abroad – International Youth Workshop Held in Maibara –

On November 1st, the International Youth Workshop, themed “Thinking about Lakes Together with the World”, was held at the Maibara Convention Hall.

A total of 14 high school students from Shiga Prefecture (Hikone Higashi, Zeze, Ritsumeikan Moriyama, Minakuchi, and Hikone Technical High Schools) joined onsite, while 13 youth participants from four countries—Malaysia, Indonesia, Uganda, and Kenya—joined online.

【Presentations & Reports】

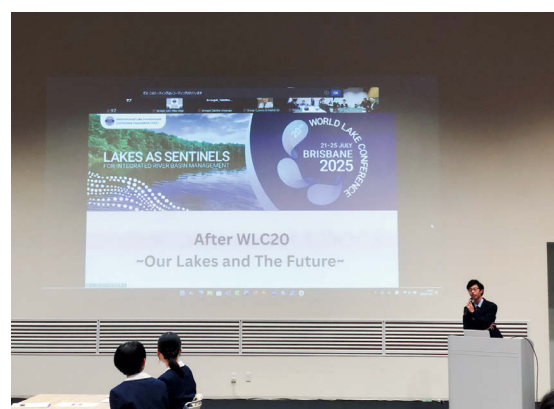
The workshop began with a presentation by Mr. Yamamoto, Director of the Lake Biwa Conservation and Restoration Division, introducing Shiga Prefecture’s involvement with “World Lake Day.” This was followed by reports from four high school students who attended WLC20, sharing their learnings and experiences from the international conference.

【International Discussion – Youth Ideas for the Future】

In the latter part of the program, after the activity presentations by youth from Japan and abroad, we held an international discussion session with mixed teams composed of Japanese and international participants on the following themes:

1. What kind of lake do you want to see when you become an adult?
2. What actions can we take, inspired by World Lake Day?

The discussions led to a set of youth proposals outlined below.



< Youth Proposals >

Inspired by “World Lake Day,” we commit to...

- **Protecting lakes as sources of drinking water:**
 - Organizing lake clean-up competitions
 - Introducing simple water purification filters
 - Practicing water conservation in daily life
- **Keeping lake water clean through everyday actions:**
 - Using reusable water bottles
 - Bringing our own shopping bags
 - Reducing plastic waste through recycling
 - Raising awareness through social media campaigns
- **Contributing to local environmental stewardship:**
 - Participating in clean-up activities
 - Joining community-based conservation initiatives
 - Paying greater attention to the protection of local flora and fauna



These youth proposals will be reflected in the next World Lake Conference Youth Session and future environmental initiatives within Shiga Prefecture.

3. Voices from Participants

Shiga, Japan



We realized that the issues of Lake Biwa are connected to the challenges faced by lakes across the world.

Shiga, Japan



I was nervous speaking in English, but the encouragement from overseas youth gave me confidence.

Malaysia



The presentations by Shiga students were clear and full of passion.

Uganda



I felt that water issues are truly shared across borders. I want to continue building on the connections made today.

Indonesia



The participants were diverse and discussions were lively. Hearing different perspectives and the strong support from organizers made the workshop truly inspiring.

Kenya



I hope future workshops will support more international students to join onsite. I'm already looking forward to the next one.

Through this program, high school students developed:

- a global perspective as members of the international community,
- the ability to express their views in English,
- the capacity to connect local issues with global challenges, and
- an international youth network for future collaboration.

A positive cycle of “Learn → Connect → Take Action” emerged as young participants articulated their vision for the future of lakes and began taking concrete steps forward. Many expressed a desire to further enhance their presentation skills and engage in higher-level discussions in the future.

ILEC will continue to support young people as they grow into the next generation of lake leaders who will shape the future of our freshwater ecosystems.



Shiga Committee for Economic Development “MLGs^{*1} and Us” Division

— From Shiga to the World: Passing on the Treasure of Lake Biwa to the Future —

The Shiga Committee for Economic Development, composed of companies and organizations in Shiga Prefecture, also held an event related to World Lake Day.

On Tuesday, July 29, 2025, the Shiga Committee for Economic Development held the “World Lake Day Pre-Forum 2025 — From Lake Biwa to the World: Co-Creating the Future Around Water” at Ritsumeikan Moriyama Junior and Senior High School.

The purpose of this forum was to provide an opportunity for young people and business leaders to learn together about the international significance of “World Lake Day” and to take action ahead of its observance on August 27.

In the first session, ILEC explained the background behind the establishment of World Lake Day and the limited availability of freshwater resources on Earth. In addition, two high school students who participated in the World Lake Conference passionately shared their experiences at the international event and their aspirations for the future. Furthermore, DAS LAB^{*2} and Hiyoshi Corporation introduced their ideas and initiatives related to water, along with examples of advanced practices.

In the second session, the ex-students introduced the “MLGs Karuta (Japanese card game)” and the “Furikake (rice seasoning) Project” that they had created when they were students. Then, participants across generations and backgrounds engaged in enthusiastic discussions about the relationship between lakes and people, as well as the challenges for the future.



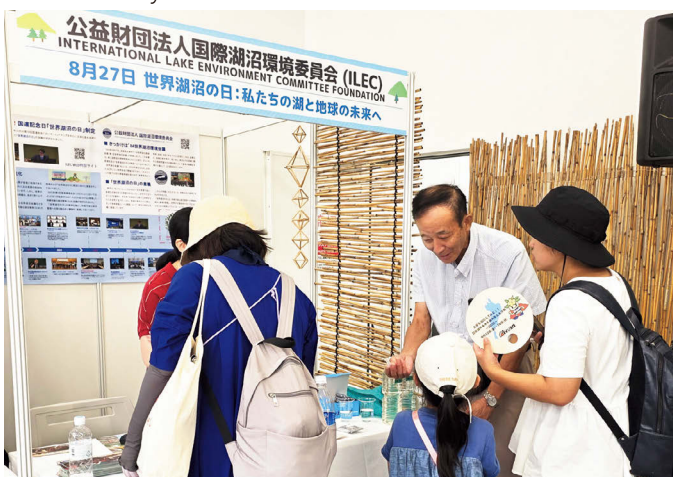
*1 MLGs (Mother Lake Goals): The Lake Biwa version of the SDGs, consisting of 13 regional goals established on July 1, 2021, to promote a healthy cycle linking environmental, economic, and social activities toward 2030.

*2 DAS LAB: A regional co-creation initiative that leverages data, art, and science to bring together companies, universities, governments, and local communities to co-create and implement futures unique to each region.

Promoting “World Lake Day” at EXPO 2025 Osaka, Kansai (Osaka)

On August 2, ILEC participated in an event of the Kansai Regional Union at the Kansai Pavilion. At our booth, we displayed posters and videos to introduce our activities and the process leading to the establishment of World Lake Day. We also offered hands-on sessions on simple water quality testing, using water from Lake Biwa and local well water. Visitors showed particular interest in the water quality tests and deepened their understanding of lake environments through the experience.

Furthermore, from September 19 to 21, we exhibited at the Future Life Village in collaboration with the Lake Biwa Conservation and Restoration Division of Shiga Prefecture. During the event, the Slovenian Ambassador to Japan and the Mayor of Kranj visited our booth and participated in commemorative photos while saying “World Lake Day!” This provided a valuable opportunity to promote the importance of lakes and to raise awareness of World Lake Day both domestically and internationally.



Kansai Regional Union



with the Mayor of Kranj, Slovenia

Our Activities Overview (FY2025)



- **April** 24-May 1 Held WLC20 Preparatory Meeting (Brisbane/Canberra, Australia)
29 Dr. Saburo Matsui, ILEC Trustee, Awarded the Order of the Sacred Treasure, Gold Rays with Neck Ribbon

- **June** 3 Received a donation from Kinki Labour Bank (Kinki Rokin)
6 Received a donation from Kansai Mirai Bank, Limited
23 **W** Hosted ILEC International Webinar “Climate Change Impacts on Lakes and Their Basins: Assessments and Observations from Lake Biwa, the Yodo River Basin, and a Global Perspective”
[Event 1]

- **July** 21-25 Co-hosted the 20th World Lake Conference (WLC20) (Brisbane, Australia)
21 **H** Hosted Youth Session “Youth in Action for Lakes” at WLC20 (Brisbane, Australia)
21 **H** Hosted International Colloquium “A Global Dialogue on Lakes, Rivers and Communities – And a Local Perspective from Australian Waterscapes in a Changing World” at WLC20 (Brisbane, Australia)
22 Held ILEC Scientific Committee General Meeting (Brisbane, Australia)
29 Participated in the “World Lake Day Pre-Forum 2025 — From Lake Biwa to the World: Co-creating the Future Around Water.” (Moriyama)

- **August** 2 Promoted “World Lake Day” at EXPO 2025 Osaka, Kansai (Osaka)
27 Participated and Exhibited with a Booth at MLGs Minna no BIWAKO Conference / COP4 (Otsu)

- **September** 6-15 Conducted Preliminary Survey for a New Project at Lake Managua (Managua, Nicaragua)
19-21 Promoted “World Lake Day” at EXPO 2025 Osaka, Kansai (Osaka)
29 Presented on “Toward Sustainable Lake Management” at the Kinki Labour Bank (Kinki Rokin) Shiga Area Promotion Meeting (Kusatsu)

- **October** 1 Dr. Masahisa Nakamura, ILEC Science Advisor, presented at the World Lake Day Commemorative Event hosted by the Indonesian Ministry of Environment (Jakarta, Indonesia)
25 Co-organized the 6th Lake Biwa Family Seminar in the Environmental Education Project “Connecting Local Action to Global Impact” (Moriyama) **[Event 2]**

- **November** 1 **H** Hosted International Youth Workshop “Thinking about Lakes Together with the World” (Maibara)
15 Promoted “World Lake Day” at the Lake Biwa Museum Festival 2025 (Kusatsu)

- **December** 11 Dr. Nakamura, Honored by the Governor of Shiga Prefecture

2026

- **January** 20-24 Implemented Technical Cooperation Project for Improvement of Indonesian Lake Water Quality (Kusatsu/Otsu) **[Event 3]**
10-31 Conducted Information Collection and Preliminary Survey on ILBM Mainstreaming in Eastern Africa (Tanzania/Kenya)

- **February** 6 Participated and Exhibited with a Booth at the “Forum on Living with Lake Biwa: From the Past to the Present, and into the Future.” (Ritto)
12-13 Held ILBM-PESSVA Workshop FY2025(Kuala Lumpur, Malaysia) **[Event 4]**

- **March** 10-11 **H** Co-organized the FY2025 Regional Understanding Program with JICA Kansai (Kusatsu/Otsu/Moriyama)

W Web **H** Hybrid (Onsite + Web)

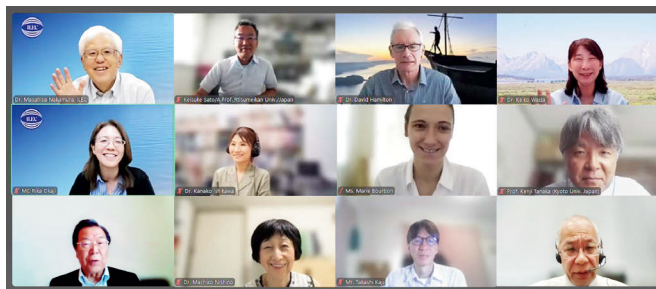
Event 1 ILEC International Webinar

Held ahead of WLC20, the webinar provided an opportunity to share the latest knowledge on lake management and to lay the groundwork for subsequent discussions. It brought together approximately 100 participants from 25 countries.

In the keynote lecture, speakers highlighted the severe impacts of climate change and unsustainable development on lakes worldwide, emphasizing the importance of positioning lakes within international policy frameworks.

The technical sessions presented diverse insights, including future risks of water shortages, global data gaps and the role of citizen science, the importance of basin governance, and ecological changes observed in Lake Biwa and Lake Tana.

These discussions contributed to strengthening the foundation for WLC20 deliberations.



Event 2 The 6th Lake Biwa Family Seminar ("Smile Plus," Kinki Rokin Social Contribution Project)

Co-hosted by: Kinki Rokin;

Certified NPO "Biwako Houjou no Sato"

In cooperation with: Horiba Advanced Techno, Co., Ltd.

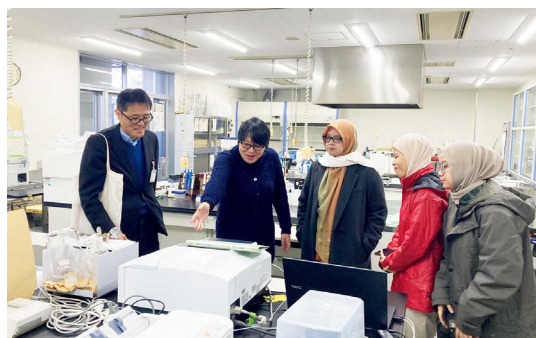
This seminar, held with the aim of promoting community-based environmental education, featured a report on WLC20, a cleanup activity, and a networking session. In the reports from children who had participated in WLC20, they expressed satisfaction with interacting with participants from other countries, including sharing experiences with participants from Malaysia who are engaged in similar efforts to conserve fireflies. In addition, a parent attending the seminar for the first time with a young child shared their delight when their child spontaneously expressed a desire to get involved in local activities after listening about the experiences of WLC20 participants.



Event 3 Technical Cooperation Project for Improvement of Indonesian Lake Water Quality

We jointly implemented the project commissioned by the Ministry of the Environment, "Technical Cooperation for Lake Water Quality Improvement in Indonesia," together with IDEA Consultants, Inc. This fiscal year marks the fifth year of the project. We welcomed three participants from the Indonesian Ministry of Environment.

During the training program, in preparation for the establishment of a lake research center in Indonesia, case studies of lake research institutes in Japan were introduced, and delivered lectures on lake management and ecosystem assessment. The lectures were also delivered online to about 100 officials from the central and provincial governments of Indonesia and in-depth discussions were held on the development of concrete policy measures.





Event 4 Participatory Ecosystem Services Shared Value Assessment (PESSVA) Project

This project was selected for funding under the Japan Fund for Global Environment by the Environmental Restoration and Conservation Agency (ERCA) and launched this fiscal year. We held a workshop in Malaysia to discuss PESSVA's contribution to environmental conservation. The workshop brought together residents, local authorities, experts, and university students. Participants actively discussed the potential expansion of PESSVA surveys in the Klang River Basin. They also discussed the development of the survey, incorporating concepts from the Integrated Lake Basin Management (ILBM) framework and Heartware (an approach to environmental conservation emphasizing human empathy and translating it into action), based on the results of the past three years.

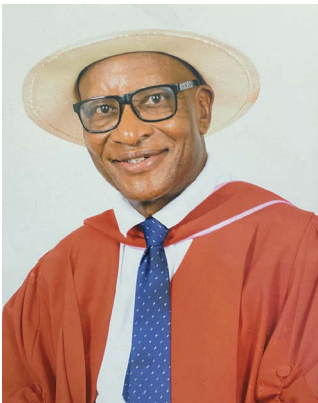


15th Term of the ILEC Scientific Committee Kicks Off

April 2025 – March 2028

Our four new members opened up about their  workplaces,  expertise, what sparked their passion for their fields, what they're working on now, their messages to readers, and more.

Meet the



Prof. Hillary Masundire

Managing Director,
Sustainable Climate
Solutions (Pvt) Ltd

 Zimbabwe/Botswana

 Ecology

One of the most formative periods in my career began when I returned to the University of Zimbabwe in 1985 to study limnology after five years as a high-school biology teacher. Supported by a scholarship, I joined a multidisciplinary team researching the ecology of Lake Kariba, the world's largest human-made lake. Under the mentorship of Professor Chris Magadza, who first introduced me to aquatic ecology as an undergraduate, I focused on the dynamics of zooplankton and their interactions with the introduced pelagic fish *Limnothrissa miodon*. This species had become the foundation of a major commercial fishery in both Zimbabwe and Zambia, and our work helped illuminate the ecological relationships supporting that industry. The years I spent on Lake Kariba shaped my scientific identity, strengthening my commitment to understanding freshwater ecosystems and their management. It was also during this time that Prof. Magadza introduced me to ILEC's work, planting early seeds for my later engagement in global ecosystem management. This included being a founding member and global Chair of the IUCN Commission on Ecosystem Management and Coordinating Lead Author on Biodiversity for the Millennium Ecosystem Assessment (MA), as well as the World Commission on Dams (WCD).

My work and personal interests have encompassed shallow entropic lakes of the Norfolk Broads in East Anglia UK, the large lakes of Africa and a range of lake types in Ireland. In between has been work on African plant dominated wetlands, the shallow temporary Makgadikgadi salt pans of Botswana, and very small waterpans of Kenya and Tanzania. This mixed bag of experience has allowed me to gain insight into the diverse form and function of lakes, and the needs for the conservation of their ecological diversity and sustainable livelihoods of the people who depend on them. In recent years I have glimpsed the tricky world of social science, more clearly stated conceptual models and the interface of lake ecology with formal and informal institutions. The whole adventure has been one of wonder. It has also been a humbling experience in what I am yet to understand. It is now a pleasure to join the Scientific Committee of ILEC for more lake adventures, whether that be on the water or behind a desk.



Prof. Kenneth Irvine

Emeritus Chair of Aquatic Ecosystems,
IHE Delft Institute for Water Education

 Ireland/Netherlands

 Aquatic Ecosystems

The committee brings together experts from diverse fields in lake management to support ILEC's international activities. The 15th term has officially begun with 11 members, including four new faces.

Information about each member can be accessed via the QR code.



New Members!

My interest in lakes began back when I was studying Biology at the University of Concepción. I still remember how, during my limnology course, a whole new world opened up to me - heading out into the field, sailing, and taking samples from the city's urban lakes was honestly the part I enjoyed the most. That's also when I first heard about eutrophication and cyanobacteria blooms, problems that were just starting to show up in those lakes. Together with my professor Dr. Oscar Parra and one of my classmates, we took part in my first day/night sampling campaign to figure out what had caused a massive fish kill in Laguna Redonda - and we found out that it was a bloom of the cyanobacteria *Microcystis aeruginosa*, the first such event ever reported in Chilean lakes. Now, almost forty years later, I look back and it's amazing to see how that local concern turned into a global issue - one that's impacting on many lakes where the anthropic influence has been the most intense.



Prof. Roberto Urrutia

Dean of Environmental Sciences Faculty at the University of Concepcion

 Chile

 Limnology



Dr. Melissa McCracken

Assistant Professor of International Environmental Policy at the Fletcher School of Tufts University

 USA

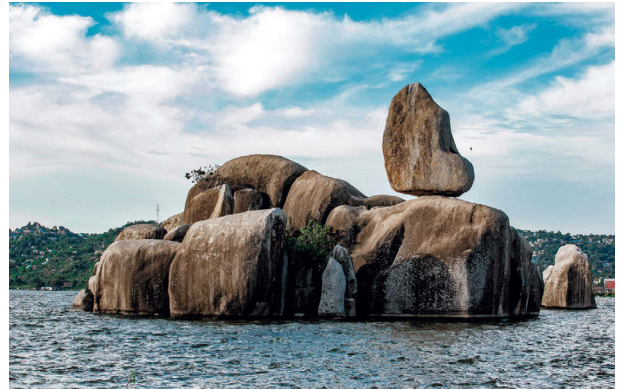
 Transboundary Water Cooperation

Freshwater is a unique and amazing resource. It is one of the few things that every human, animal, plant, and other living species has in common. Human culture and civilization developed from the need to work together to manage water. This centrality of water and cooperation to the human experience sparked my interest in studying internationally shared surface- and groundwaters. Water is both a human and a physical resource and therefore requires collaborative, interdisciplinary solutions to address the many challenges facing shared waters today. Drawing on my technical and governance background, I focus on cooperation and conflict over shared water resources. In particular, I explore questions on what drives conflict and how states can develop effective cooperative processes to share transboundary resources in an equitable and sustainable manner. I am one of the co-directors of the Shared Waters Lab Partnership, which aims to advance water cooperation and diplomacy. To do this, we operate the Transboundary Freshwater Diplomacy Database, hosted at Oregon State University, to draw insights from global empirical data on the institutional capacity in transboundary river and lake basins.



Tanzania to Host WLC21 in 2027: A New Platform for Dialogue Connected by African Lakes

The next World Lake Conference (WLC21) will be held in Tanzania, East Africa—the second time the event takes place on the continent since Kenya hosted it in 2005. Tanzania is home to several globally significant transboundary lakes. Lake Victoria is the world’s second-largest freshwater lake, Lake Tanganyika is both the longest and the second-deepest freshwater lake on Earth, and Lake Malawi is renowned for its exceptional diversity of endemic species. These lakes support the region through drinking water, fisheries, tourism, hydropower production, and cross-border trade.



Bismarck Rock on Lake Victoria

The local host, the Water Institute under the Tanzanian Ministry of Water, has trained water-sector professionals for more than 50 years and hopes to establish a regional center of excellence for lake basin management. Tanzania also offers iconic natural settings, from Mount Kilimanjaro to the wildlife-filled Serengeti National Park. WLC21 will gather participants from around the world to discuss urgent water and environmental policy issues, with a focus on sustainable lake basin management and climate resilience. We hope you will join us and gain unique insights from the knowledge and experience shaped by African lakes.

Thank You for Your Support! FY2025

● ILEC received sponsorships from the following organizations (in no particular order)



● ILEC received donations from the following organizations (in no particular order)



Be an ILEC Supporter (Sponsors and Donors)

We will showcase the logos of your organizations that have generously supported us on our website and newsletters. For additional information, please visit our website. ▶ <https://www.ilec.or.jp/en/support>



INTERNATIONAL LAKE ENVIRONMENT COMMITTEE FOUNDATION (ILEC)

1091 Oroshimo-cho, Kusatsu-city Shiga 525-0001, JAPAN
-Secretariat- Tel:+81-77-568-4567 / Fax:+81-77-568-4568 / E-mail: infoilec@ilec.or.jp
Website: www.ilec.or.jp/en / Facebook: www.facebook.com/ilec.english

*The latest issue and back issues of this newsletter are also available on our website above.